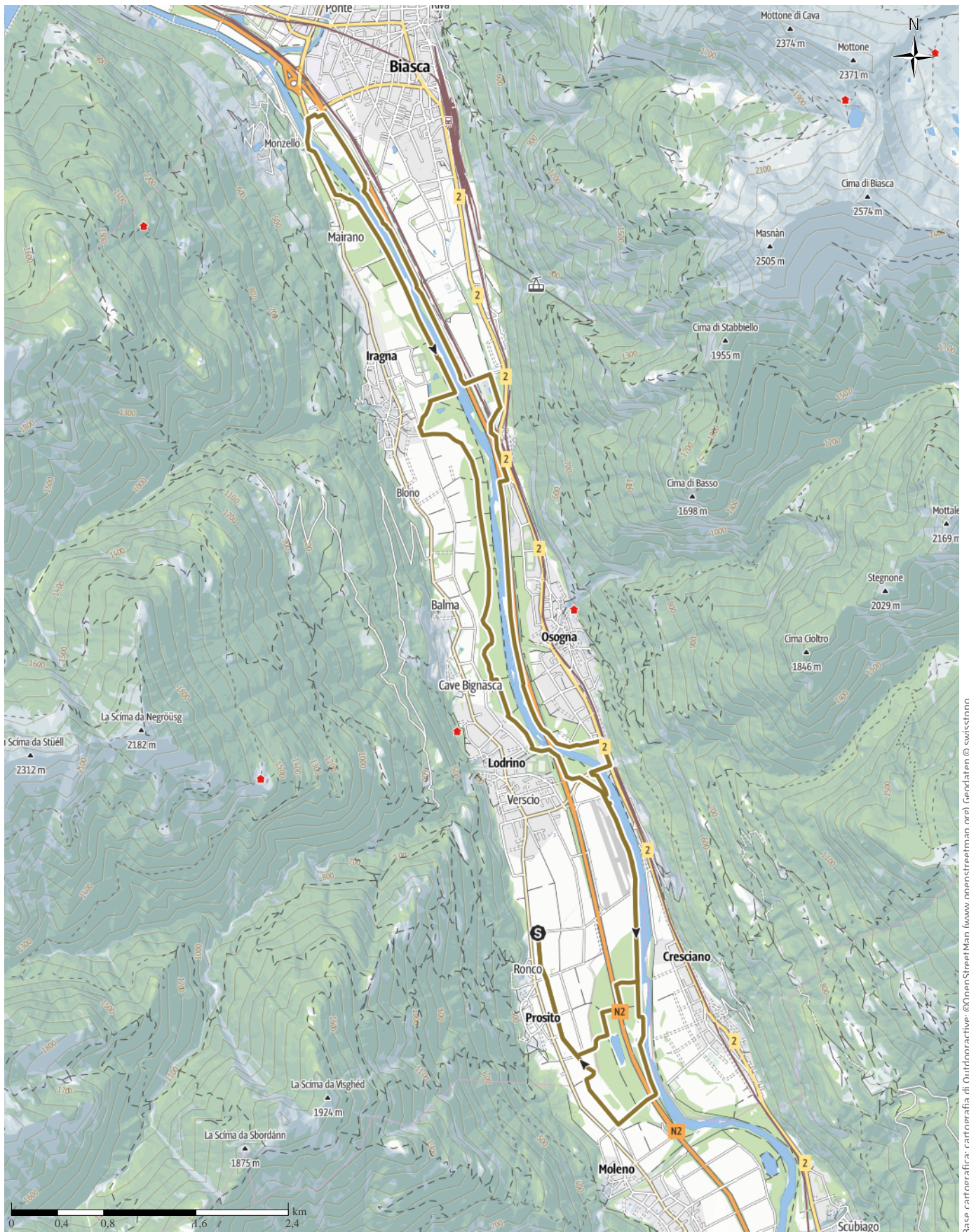


# LOOP B 25km

↔ 24,6 km    ⌚ 4:30 h    ▲ 48 m    ▼ 50 m    Difficoltà -



Base cartografica: cartografia di Outdooractive; ©OpenStreetMap (www.openstreetmap.org) Geodaten © swisstopo



LOOP B 25km

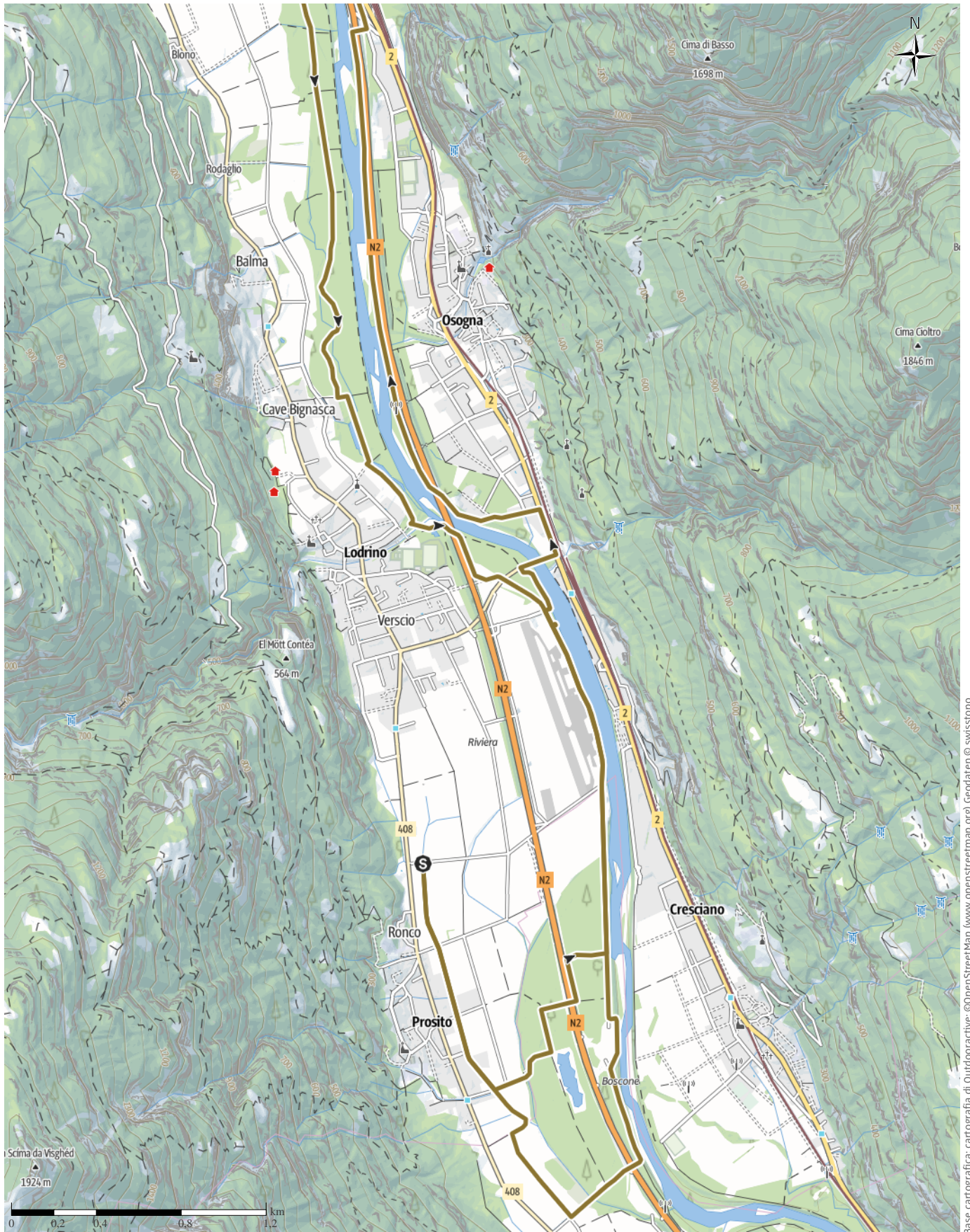
↔ 24,6 km

🕒 4:30 h

▲ 48 m

▼ 50 m

Difficoltà -





LOOP B 25km

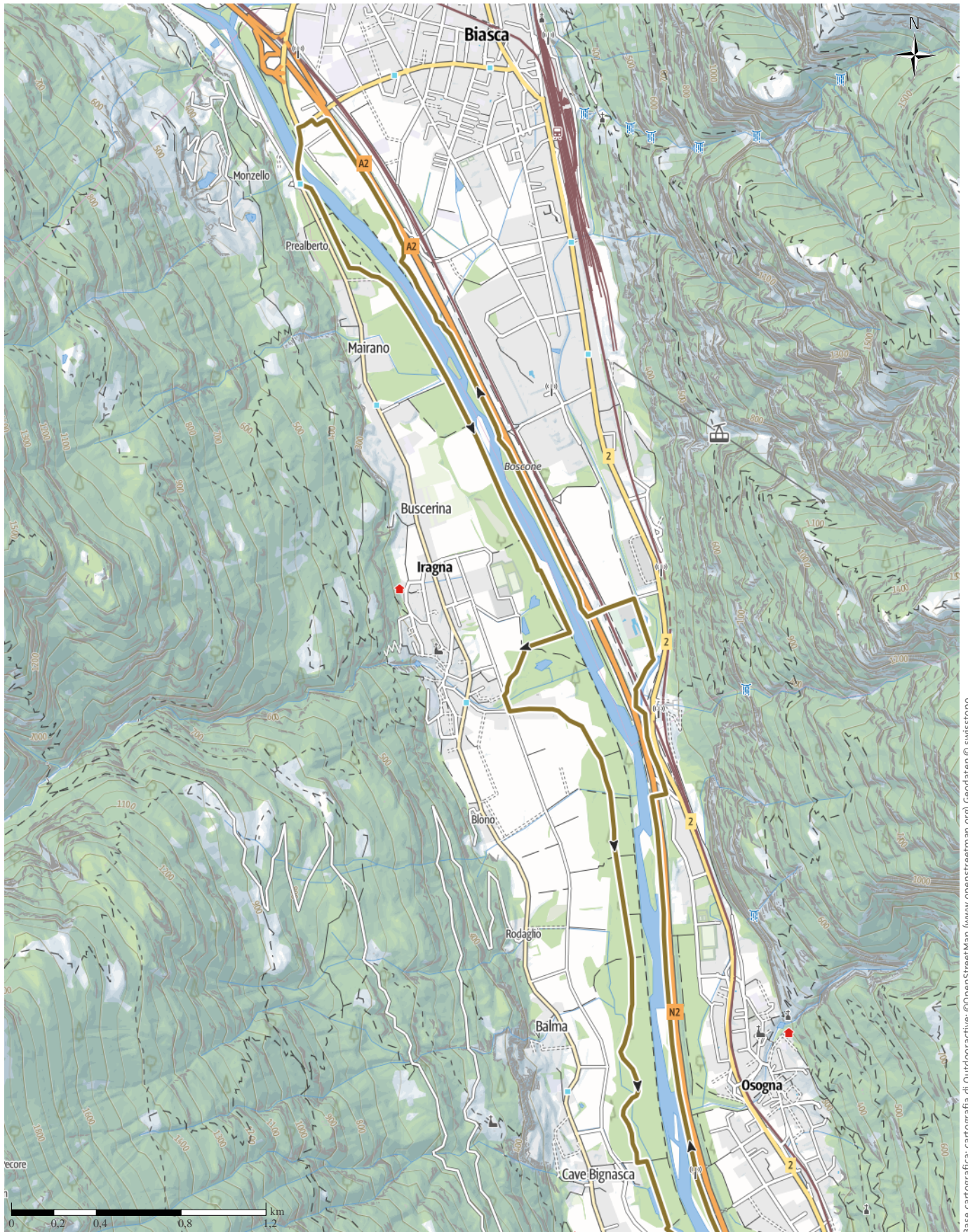
↔ 24,6 km

🕒 4:30 h

▲ 48 m

▼ 50 m

Difficoltà -



Base cartografica: cartografia di Outdooractive; ©OpenStreetMap (www.openstreetmap.org) Geodaten © swisstopo



# LOOP B 25km

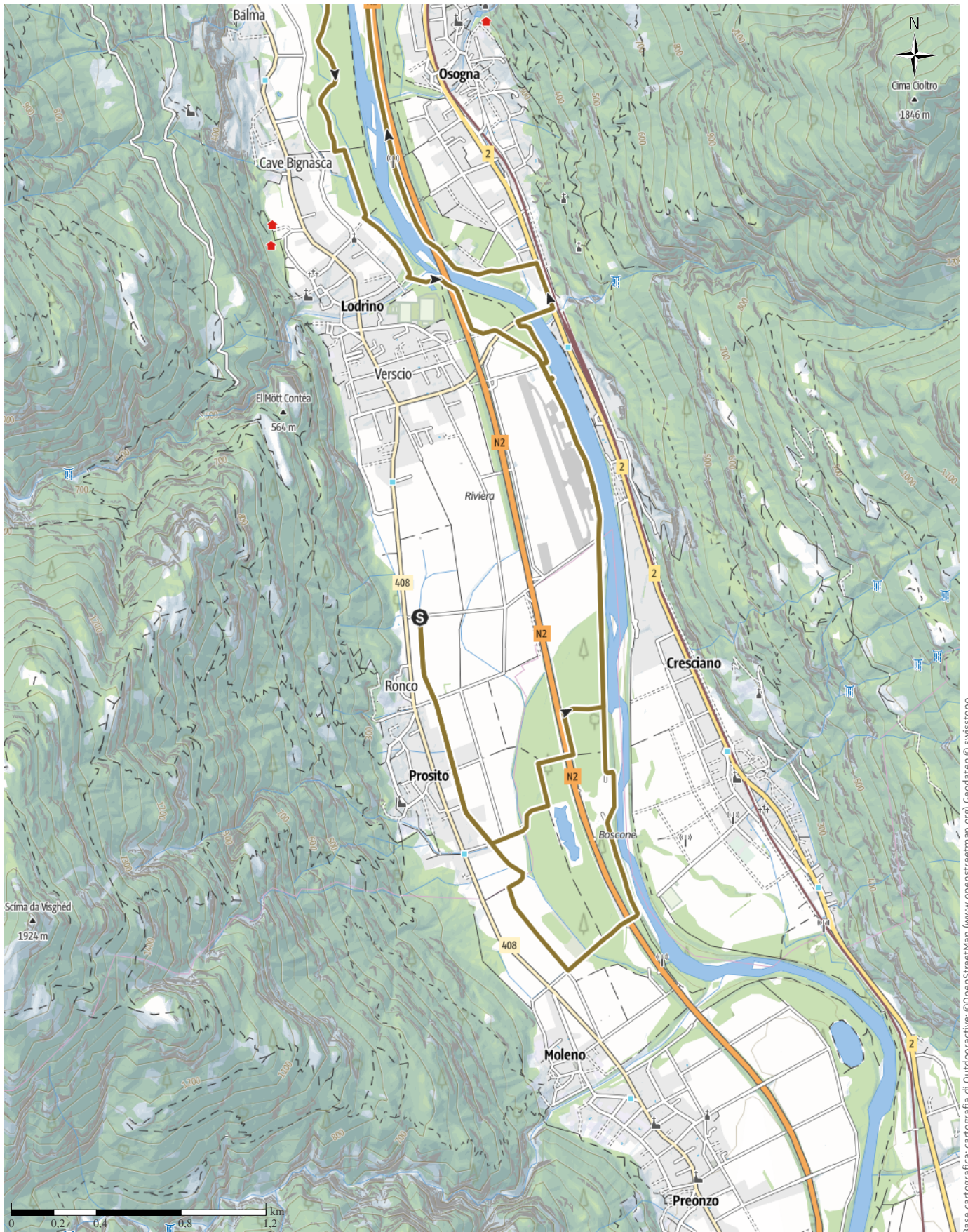
↔ 24,6 km

🕒 4:30 h

▲ 48 m

▼ 50 m

Difficoltà -

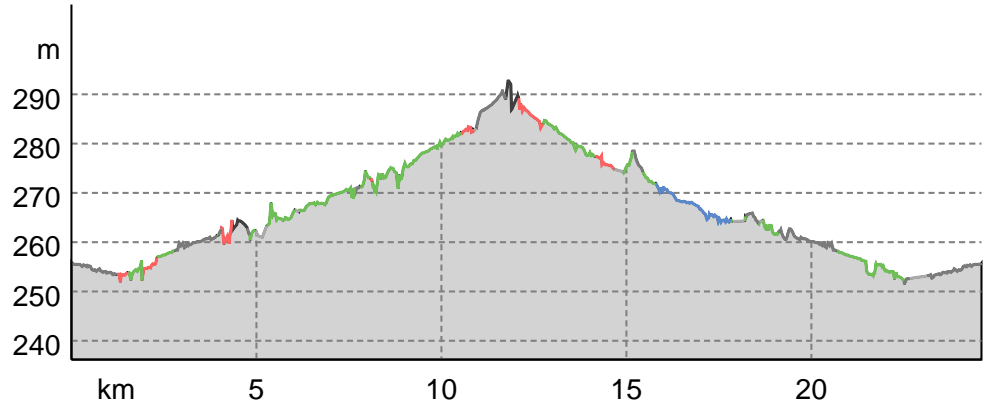


## LOOP B 25km

### Tipo di strada

Asfalto	7,3 km
Strada	2 km
sterrata	
Sentiero naturalistico	10,3 km
Sentiero	2,5 km
Strada	0,8 km
Sconosciuto	1,7 km

### Profilo altimetrico



### Dati del percorso

#### Escursione a cavallo

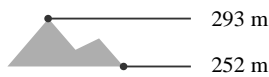
Distanza ↔ 24,6 km

Durata 🕒 4:30 h

Salita ⬆️ 48 mt

Discesa ⬇️ 50 mt

Livello sul mare



### Associazione Endurance2020

Ultimo aggiornamento: 08.04.2024



Scannerizza questo codice QR e salva questo percorso per l'uso offline, condividilo con gli amici e altro...

Sito web

<https://out.ac/IRKIVc>

### Percorso B

tra Lodrino-Biasca

### Waypoint

#### 📍 Groompoint 1

Posteggi RUAG - Parkplatz RUAG I cavalli hanno percorso 4km-Die Pferde haben 4 km gemacht-Les chevaux ont parcouru 4km

#### 📍 Groompoint 2

Depuratore BIASCA- Wasserreiniger Biasca I cavalli hanno percorso 9km-Die Pferde haben 9 km gemacht-Les chevaux ont parcouru 9km

#### 📍 Groompoint 3

Via Camana - Strasse Camana I cavalli hanno percorso 15km-Die Pferde haben 15km gemacht-Les chevaux ont parcouru 15km







#### 📍 Groompoint 4

Posteggi RUAG - Parkplatz RUAG I cavalli hanno percorso 20km Die Pferde haben 20km gemacht Les chevaux ont parcouru 20km

### Apri il percorso sul tuo Smartphone

## Legenda


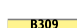
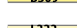
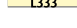
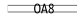



### Topografia

	Bosco, foresta
	Palude
	Prato
	Zona residenziale con edifici singoli
	Zona commerciale con edifici singoli
	Cimitero
	Campo da golf
	Impianti sportivi, stadio
	Stadio
	Piscina all'aperto
	Vigneto
	Incisioni rupestri
	Confini di stato
	Confine di stato
	Confine comunale
	Linea altimetrica
	Zona ad utilizzo speciale
	Riserva naturale




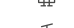
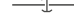





### Elementi topografici

	Montagna/cima
	Punto altimetrico
	Roccia
	Caverna
	Chiesa
	Cappella
	Cimitero
	Palazzo/castello
	Abbazia
	Monumento
	Rovina
	Miniera
	Tomba
	Torre di trasmissione
	Pala eolica
	Mulino a vento / acqua
	Punto panoramico

### Strade e sentieri

	Autostrada numero
	Strada statale con numero
	Nazione, regione, provincia
	Strada comunale
	Strada consorziale
	Strada agricola
	Sentiero
	Via ferrata

### Impianti e treno

	Cabinovia
	Cabinovia
	Seggiovia
	Skilift
	Teleferica
	Treno
	Metro
	Metro
	Tram
	Stazione ferroviaria