

LOOP A 38km 2024

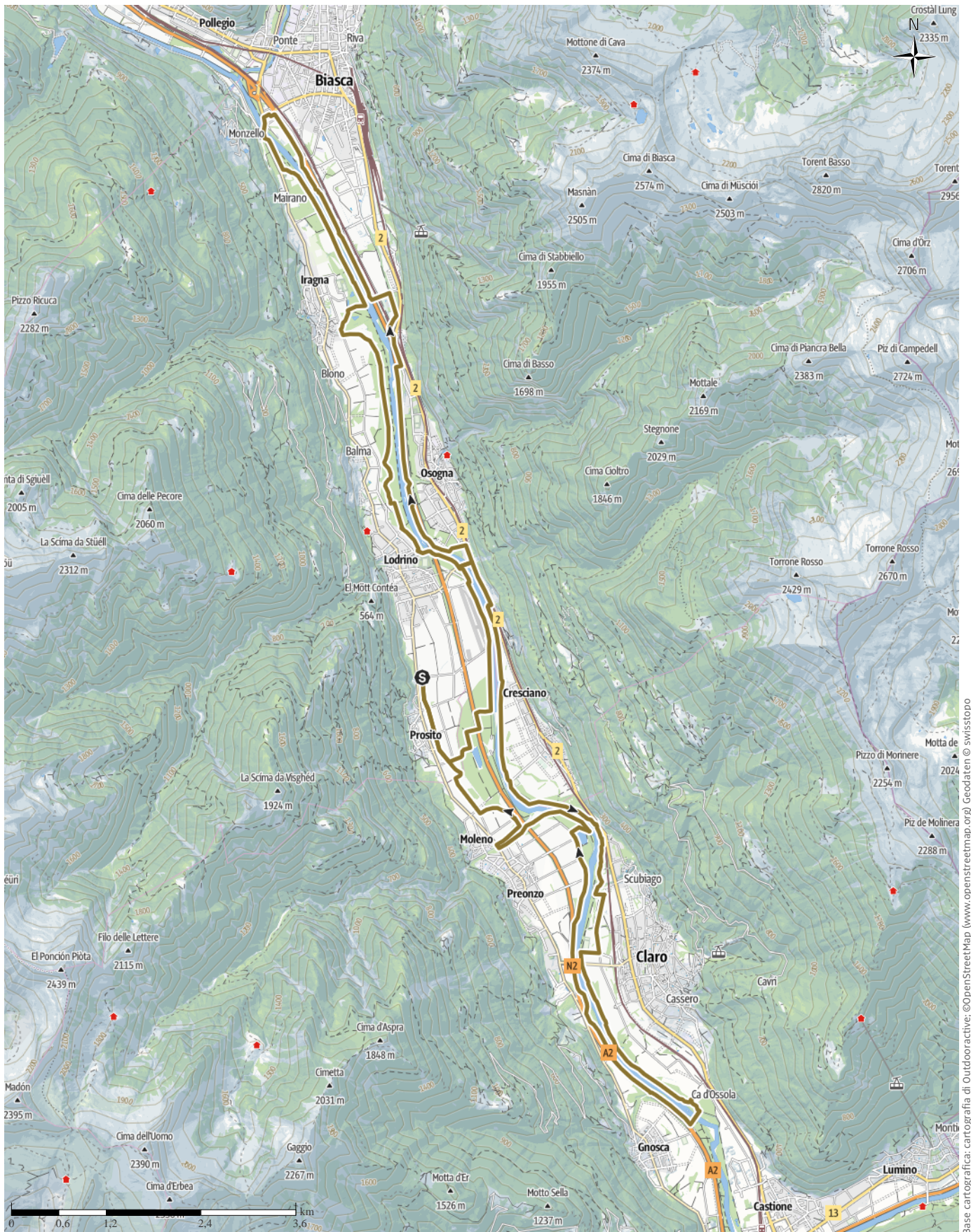
← 38 km

🕒 7:00 h

▲ 69 m

▼ 72 m

Difficoltà -



Base cartografica: outdooractive; ©OpenStreetMap (www.openstreetmap.org) Geodaten © swisstopo

LOOP A 38km 2024

↔ 38 km

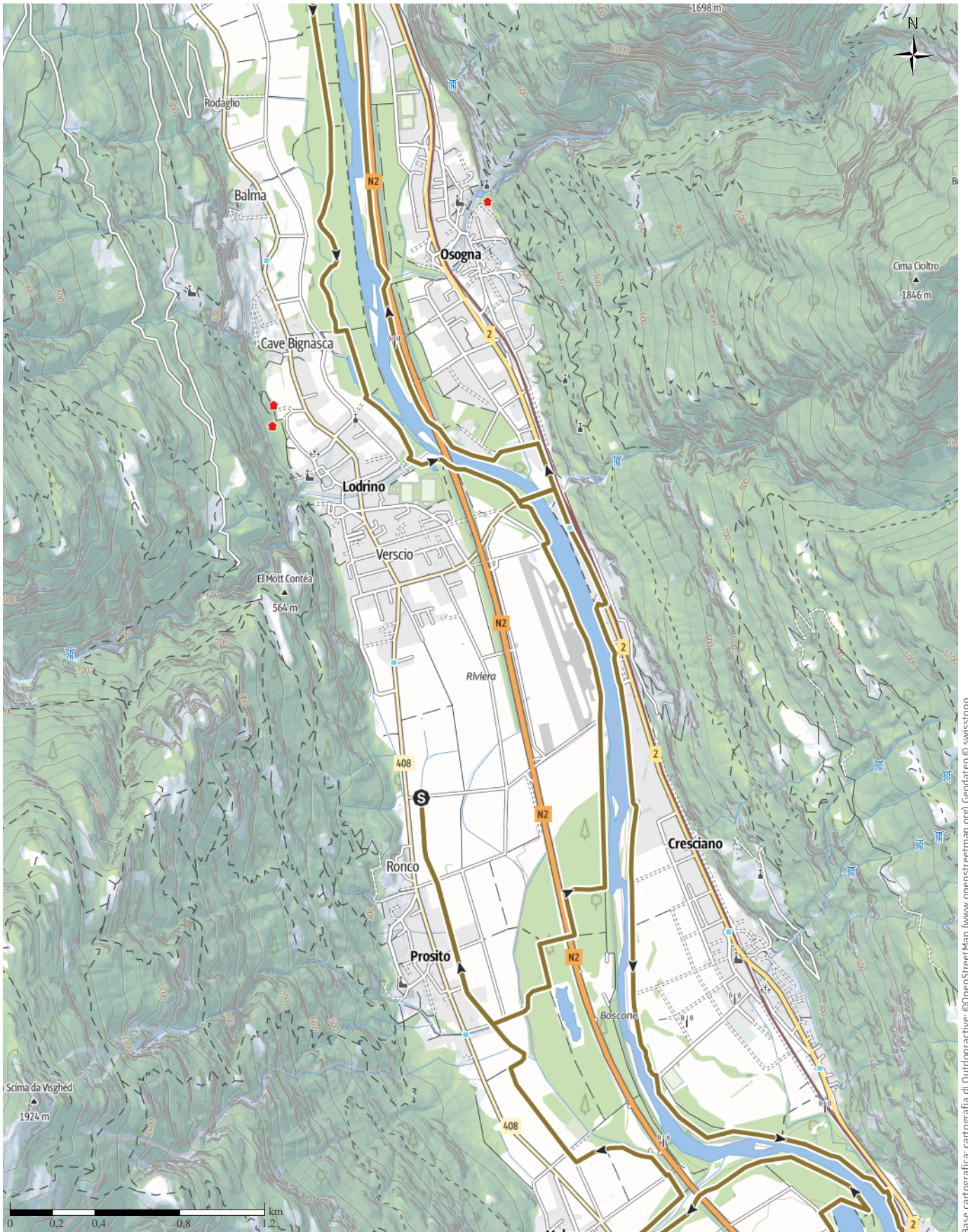
🕒 7:00 h

▲ 69 m

▼ 72 m

Difficoltà

-



Base cartografica: cartografia di Outdooractive; ©OpenStreetMap (www.openstreetmap.org) Geodaten © swisstopo

LOOP A 38km 2024

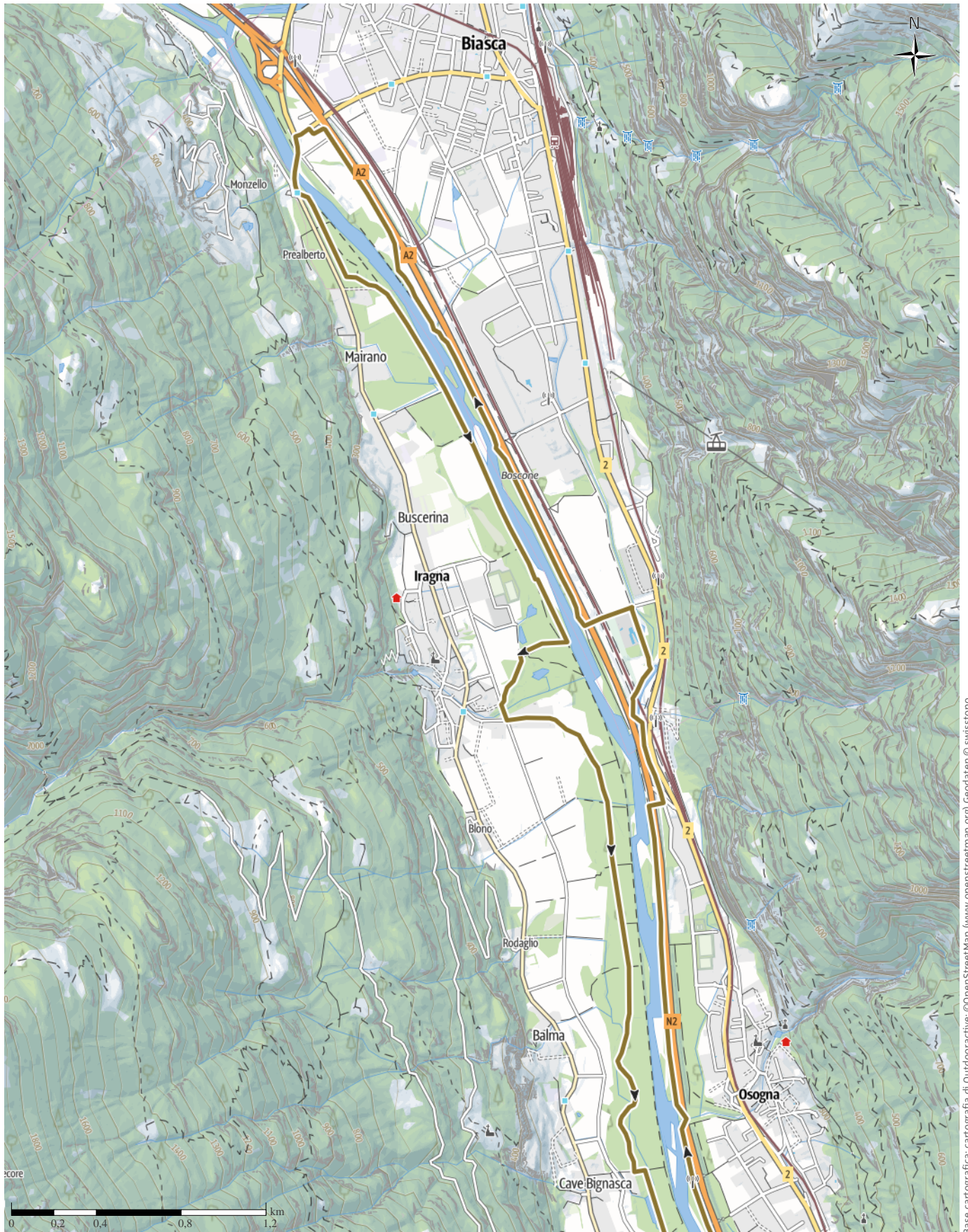
↔ 38 km

🕒 7:00 h

▲ 69 m

▼ 72 m

Difficoltà -



Base cartografica: cartografia di Outdooractive; ©OpenStreetMap (www.openstreetmap.org) Geodaten © swisstopo

LOOP A 38km 2024

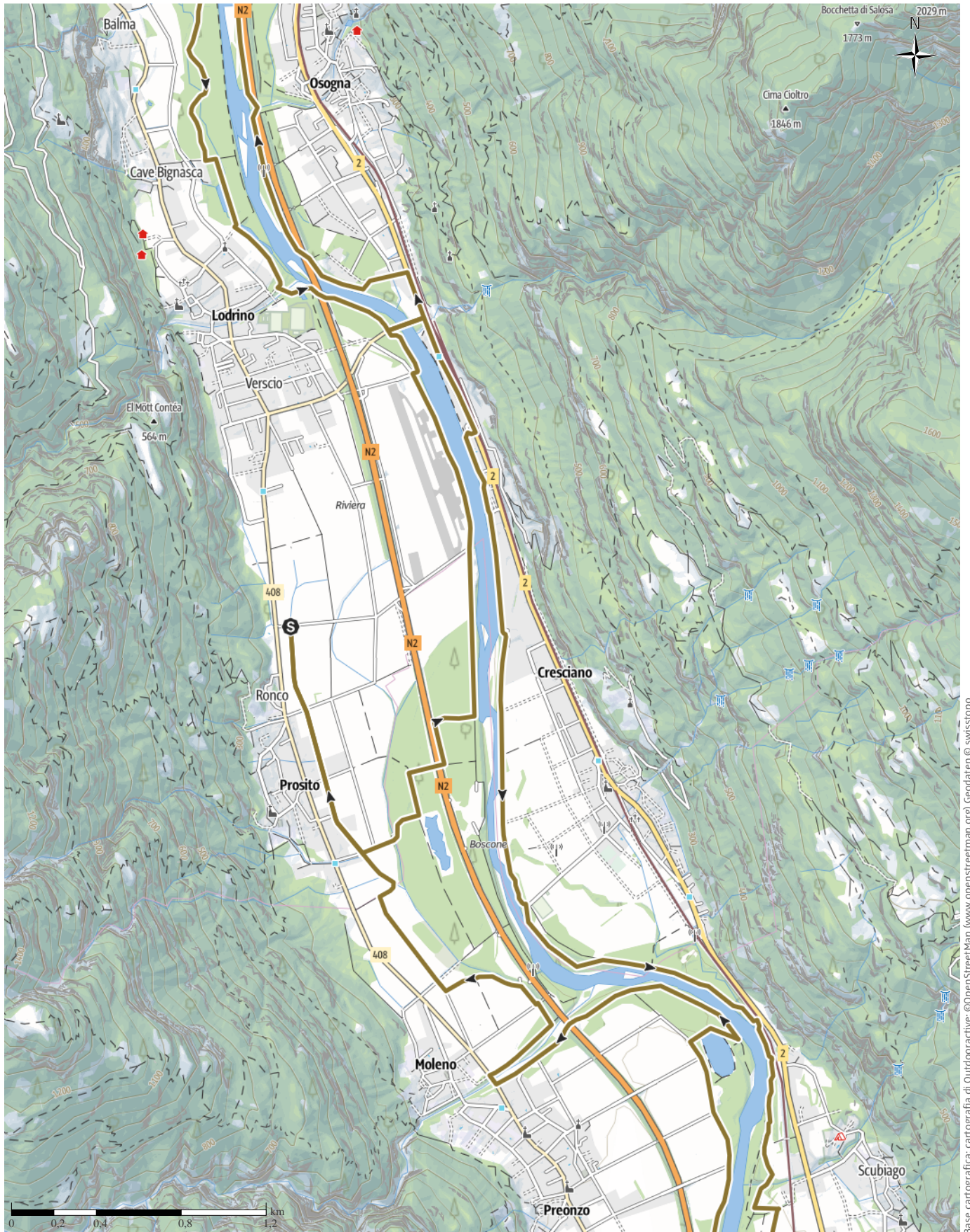
↔ 38 km

🕒 7:00 h

▲ 69 m

▼ 72 m

Difficoltà -



Base cartografica: outdooractive; ©OpenStreetMap (www.openstreetmap.org) Geodaten © swisstopo

LOOP A 38km 2024

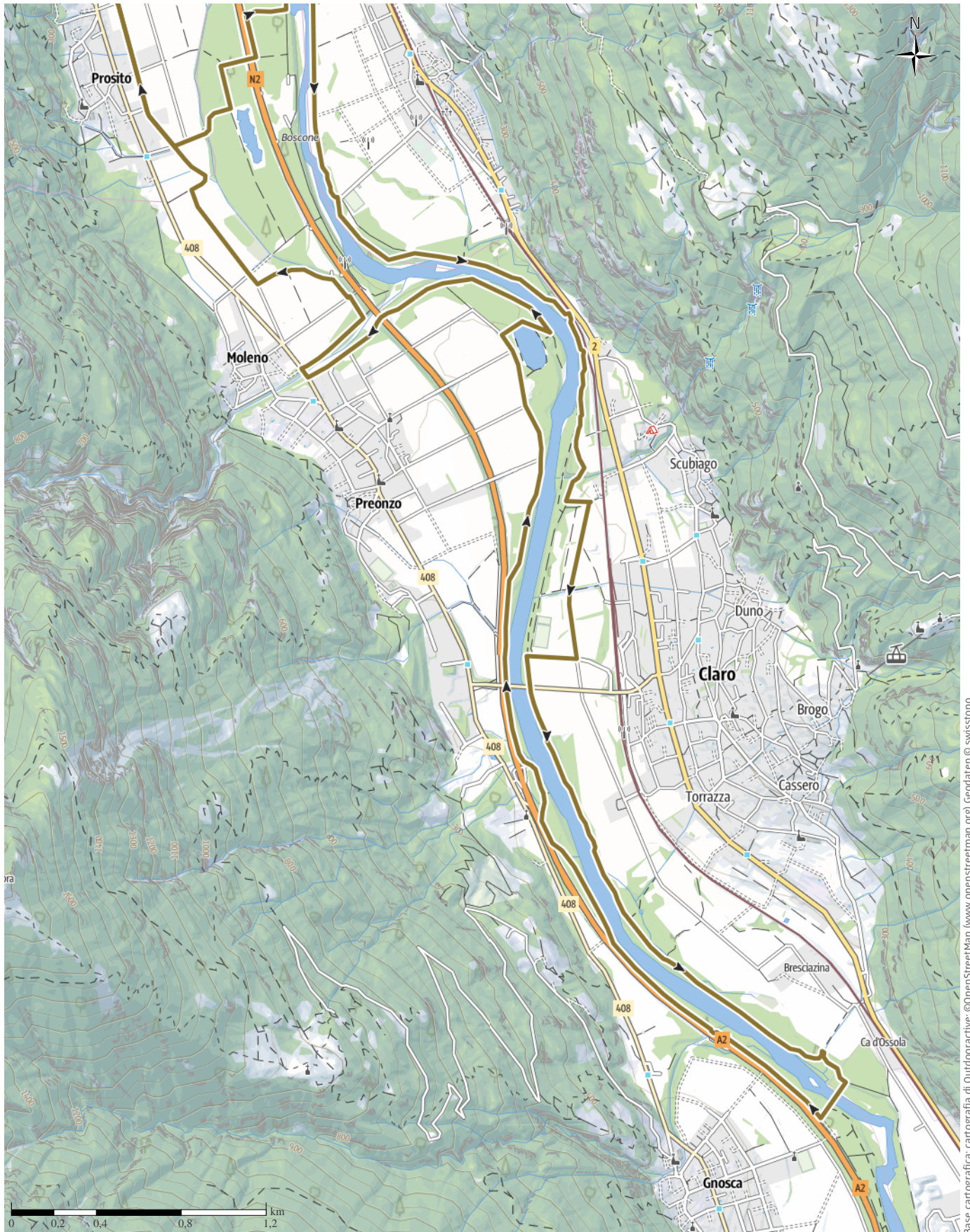
↔ 38 km

🕒 7:00 h

▲ 69 m

▼ 72 m

Difficoltà -



Base cartografica: cartografia di Outdooractive; ©OpenStreetMap (www.openstreetmap.org) Geodaten © swisstopo

LOOP A 38km 2024

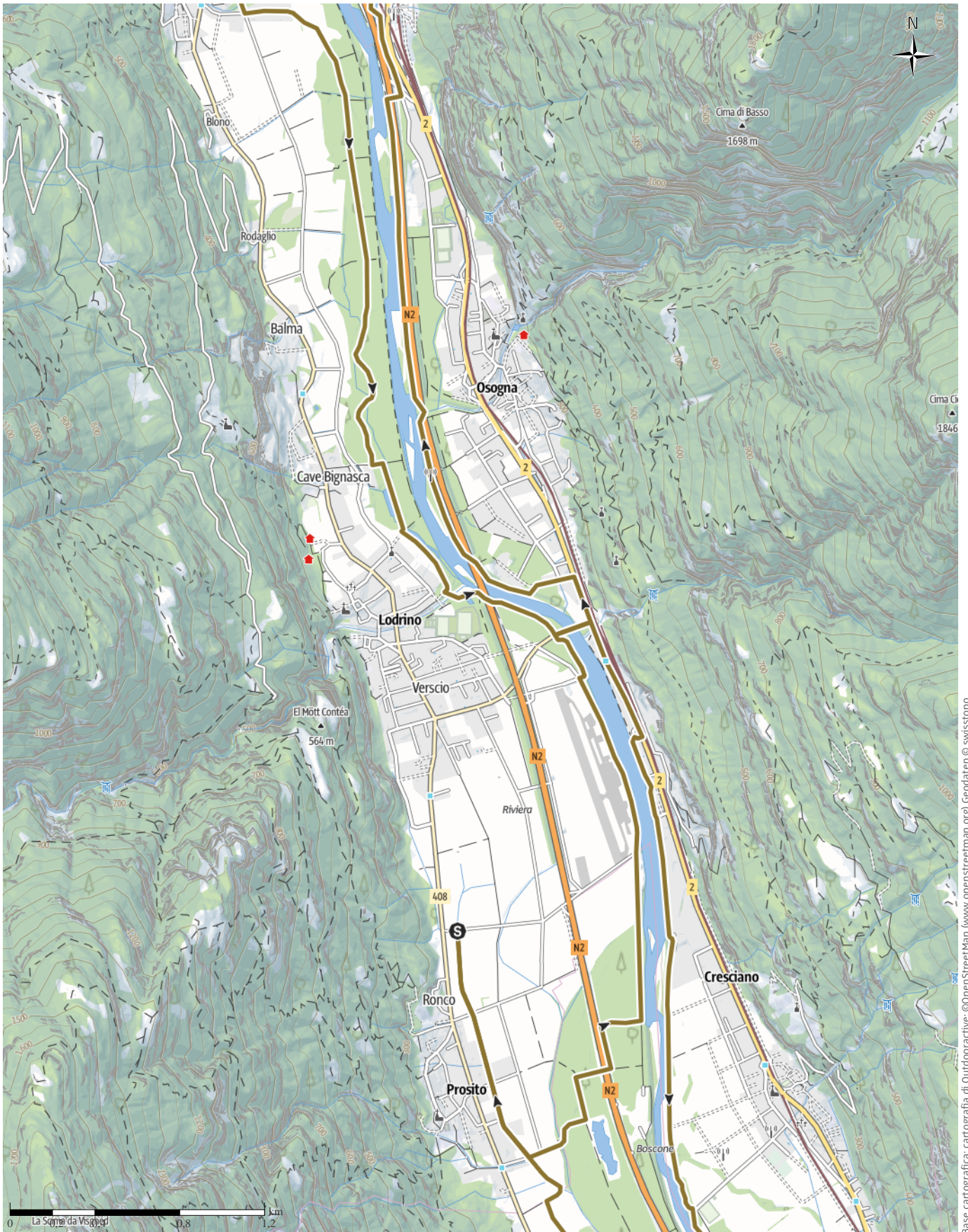
↔ 38 km

🕒 7:00 h

▲ 69 m

▼ 72 m

Difficoltà -



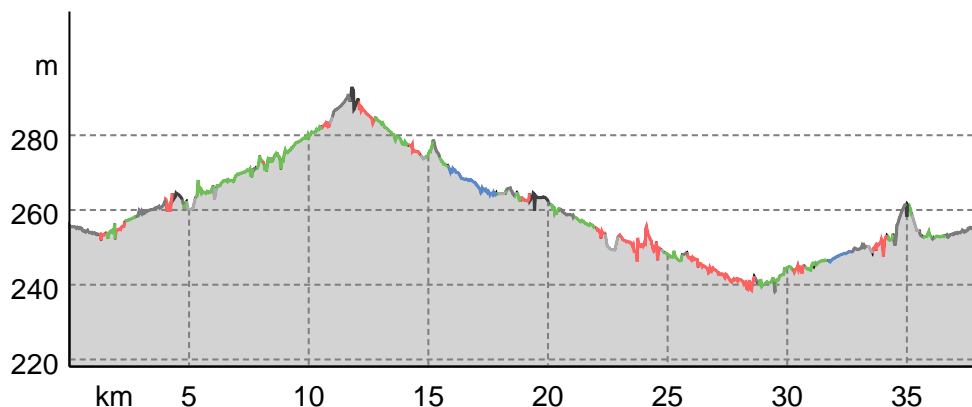
Base cartografica: cartografia di Outdooractive; ©OpenStreetMap (www.openstreetmap.org) Geodaten © swisstopo

LOOP A 38km 2024

Tipo di strada

Asfalto	7,9 km
Strada	3 km
sterrata	
Sentiero	14 km
naturalistico	
Sentiero	9 km
Strada	1,6 km
Sconosciuto	2,5 km

Profilo altimetrico



Dati del percorso

Escursione a cavallo

Distanza ↔ 38 km

Durata ⌚ 7:00 h

Salita ▲ 69 mt

Discesa ▼ 72 mt

Difficoltà -

Impegno fisico ●●●●●

Tecnica ●●●●●

Livello sul mare

293 m

238 m

Periodo consigliato

GEN | FEB | MAR

APR | MAG | GIU

LUG | AGO | SET

OTT | NOV | DIC

Valutazioni

Autori

Emozione ●●●●●

Paesaggio ●●●●●

Community

Altri dati

Associazione
Endurance2020

Ultimo aggiornamento: 08.04.2024

Percorso A

tra Lodrino-Biasca-Bellinzona.

Waypoint

Groompoint 1

Posteggi RUAG - Parkplatz RUAG I cavalli hanno percorso 4km-Die Pferde haben 4 km gemacht-Les chevaux ont parcouru 4km

Groompoint 2

Depuratore Biasca - Wasserreiniger Biasca I cavalli hanno percorso 9km-Die Pferde haben 9 km gemacht-Les chevaux ont parcouru 9km

Groompoint 3

via Camana IRAGNA - Strasse Camana IRAGNA I cavalli hanno percorso 15km-Die Pferde haben 15 km gemacht-Les chevaux ont parcouru 15km

Groompoint 4

Via ai Cav CRESCIANO - Strasse ai Cav CRESCIANO I cavalli hanno percorso 20km-Die Pferde haben 20 km gemacht-Les chevaux ont parcouru 20km

Groompoint 5

Campo Calcio Claro - Fussballplatz Claro I cavalli hanno percorso 25km-Die Pferde haben 25km gemacht-Les chevaux ont parcouru 25km

Groompoint 6

Ecopunto Preonzo- Müllabfuhr Preonzo I cavalli hanno percorso 33km-Die Pferde haben 33 km gemacht-Les chevaux ont parcouru 33km

Apri il percorso sul tuo Smartphone



Scannerizza questo codice QR e salva questo percorso per l'uso offline, condividilo con gli amici e altro...




Sito web

<https://out.ac/IRKIJT>

LOOP A 38km 2024

Legenda

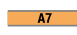
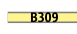
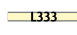
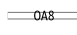




Topografia

	Bosco, foresta
	Palude
	Prato
	Zona residenziale con edifici singoli
	Zona commerciale con edifici singoli
	Cimitero
	Campo da golf
	Impianti sportivi, stadio
	Stadio
	Piscina all'aperto
	Vigneto
	Incisioni rupestri
	Confini di stato
	Confine di stato
	Confine comunale
	Linea altimetrica
	Zona ad utilizzo speciale
	Riserva naturale


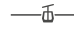

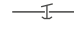
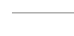





Elementi topografici

	Montagna/cima
	Punto altimetrico
	Roccia
	Caverna
	Chiesa
	Cappella
	Cimitero
	Palazzo/castello
	Abbazia
	Monumento
	Rovina
	Miniera
	Tomba
	Torre di trasmissione
	Pala eolica
	Mulino a vento / acqua
	Punto panoramico

Strade e sentieri

	Autostrada numero
	Strada statale con numero
	Nazione, regione, provincia
	Strada comunale
	Strada consorziale
	Strada agricola
	Sentiero
	Via ferrata

Impianti e treno

	Cabinovia
	Cabinovia
	Seggiovia
	Skilift
	Teleferica
	Treno
	Metro
	Metro
	Tram
	Stazione ferroviaria